







# Siemens Building Technology

**SIEMENS**  
*Ingenuity for life*



# When it all started...

1847	1896	1905	1940	1962	1974	1996	1998
Founding of Siemens AG	Founding of the electronic institute Theiler & Cie, Zug	Change of name; to Landis & Gyr (L&G)	Founding of Cerberus AG and thermic department of L&G	Elektrowatt AG takes over Cerberus AG	Elektrowatt AG takes over Staefa Control System	Elektrowatt AG takes over Landis & Gyr and merges with L&G Building Control and SCS to Landis & Staefa	Siemens AG takes over Elektrowatt AG (industry sector) with Landis & Staefa and Cerberus AG and becomes Siemens Building
							



## today`s situation



**400+**  
branch offices

**16**  
R&D sites

**200,000+**  
service agreements

**9**  
production  
facilities

**2,000,000 t**  
CO<sub>2</sub> savings per year

**4,300,000**  
fire and smoke detectors  
sold in fiscal year 2015

**27,000+**  
employees, 10,000 of  
those service technicians

**40,000+**  
new system installations globally  
each year; 500,000+ total

# Take advantage of digitalization





Imagine if...A software powerhouse with 17.500 software engineers supports you



Number of Software Engineers

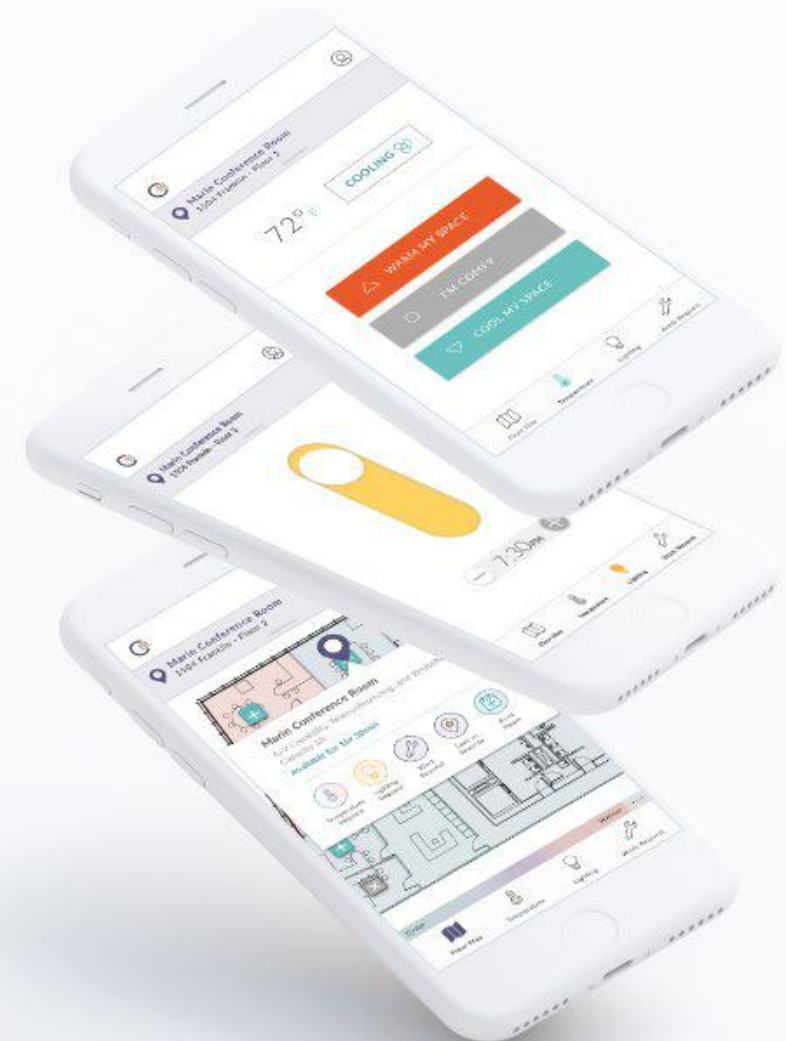


## PORTFOLIO

# Siemens acquiring Building Robotics Inc.

Siemens Building Technologies is extending its leadership in smart buildings by acquiring Building Robotics Inc., the creator of Comfy®. Comfy is a leading digital workplace app, creating more personalized and responsive workplaces while providing analytics for efficient building operations.

Sharpen our business focus in electrification,  
automation, and digitalization





## Flexible System Architecture

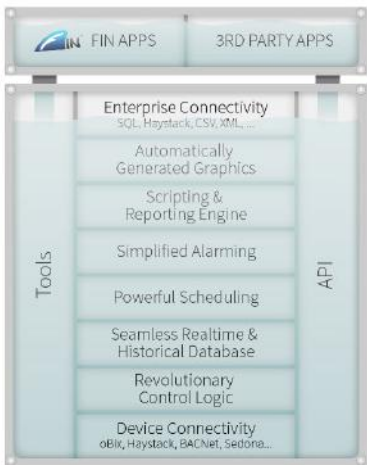
With FIN 4.0 you can mix and match hardware components creating system architectures to meet any job's requirements. FIN technology can live at every level of the architecture; the edge device, global controller, server, and even the cloud! With a variety of FIN Application Server Platforms (FASP), you have one technology that provides a unifying toolset for all your solutions!



**Intellistar Device**  
-Global controller or edge device  
-Intellistar branded FIN software  
-Optimized for wireless - 3G, WiFi, Bluetooth

## What is FIN 4.0

FIN (Fluid Integration) is the next generation Building Automation System (BAS). It features a new applications server technology that embraces tagging and data modeling, which enables unprecedented new functionality. It works as seamlessly on a tablet and smart phone as it does on a desktop. FIN is a HTML5 browser based unified toolset optimized for efficient workflows. It dramatically reduces engineering labor, helping you build your customer's solution easier, faster, and better. FIN was designed to encourage community collaboration and seamlessly supports add-on applications such as automated analytics.



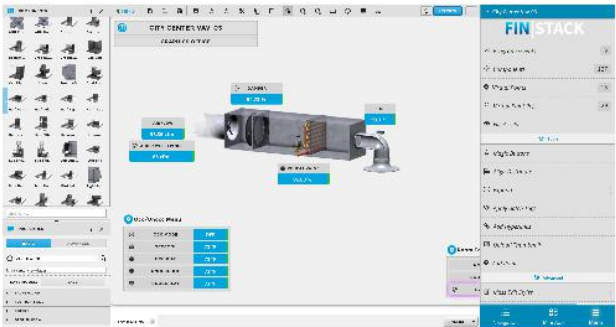
## PORTFOLIO

# Siemens acquiring J2 Innovations

Siemens is acquiring J2 Innovations, a leading software framework provider for building automation and IoT, headquartered near Los Angeles, California. J2 Innovations will be managed as an independent legal entity and wholly-owned subsidiary of Siemens Industry, Inc.

Sharpen our business focus in electrification, automation, and digitalization

## Advanced Applications Environment



## GRAPHICS

Imagine graphics that are automatically generated: navigation, point summaries and links to histories that simply work without any laborious setup, all combined with custom graphics that can be created super-fast with the best tools in the industry.



# enlighted<sup>TM</sup>

A Siemens Company

## Enlighted Transforms Office Buildings

Enlighted digitizes commercial real estate and creates Brilliant Buildings<sup>TM</sup> that transform the office work experience, provide insights to optimize use of real estate, and lower operating costs.

# Imagine if... Buildings interact with building users...

**SIEMENS**  
*Ingenuity for life*

Digital transformation of Agnelli foundation's historical HQ



Control my  
working  
environment

Connected with  
colleagues

Find work  
spaces

Higher  
productivity

Keyless solution  
to access the  
building

Actionable insight



# Desigo CC - Building Management System



## Desigo Control Point



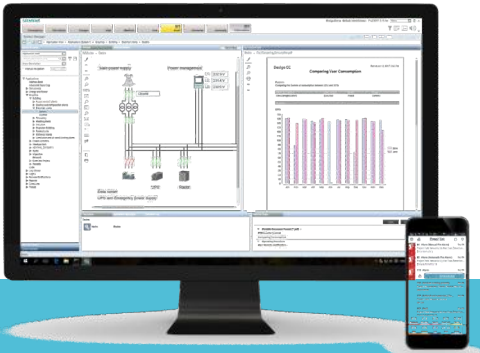
- Operating and Monitoring
- Standard graphics
- Trend /Alarms/Schedules
- Email as remote notification recipient
- Single discipline



## Desigo CC Compact



- Optimal features packs
- Trend comparison view
- Report viewer and editor
- Long term storage and archiving
- Single discipline
- Can run on embedded hardware



## Desigo CC



- Distributed systems
- Advanced reporting
- Logics
- Unlimited clients
- Suitable for single or multi discipline projects

Infrastructure/Knowhow

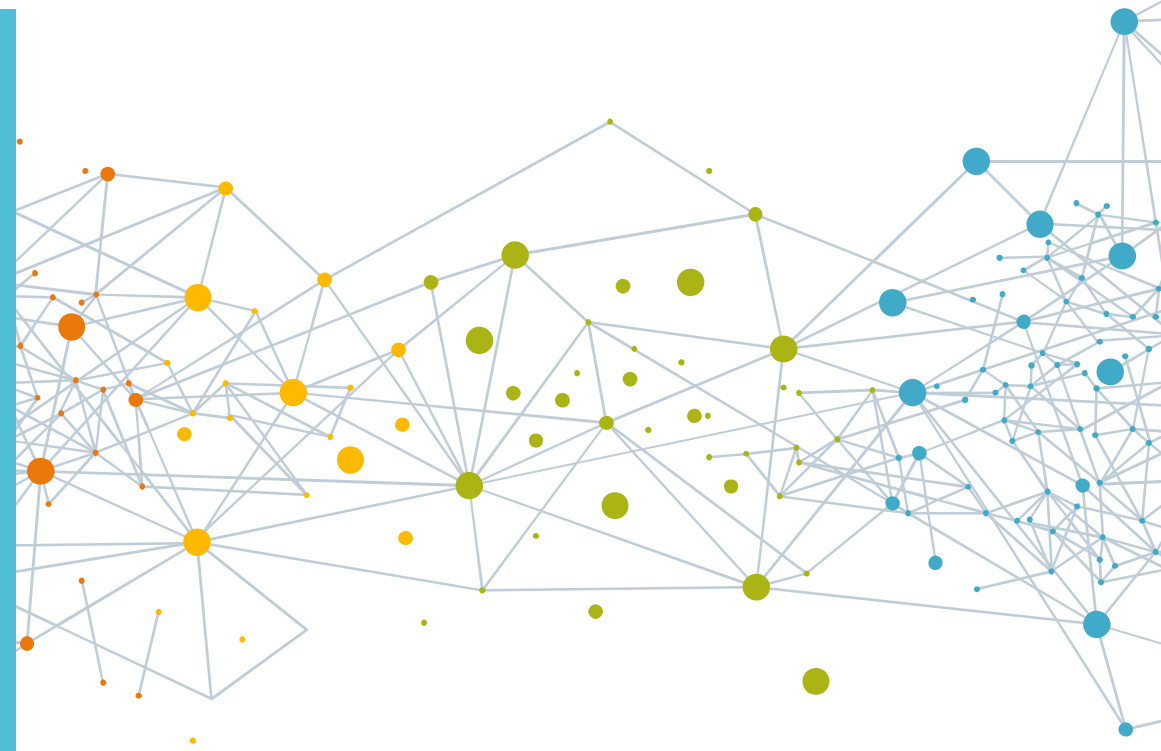
# Tailor the portfolio with “Desigo CC Ecosystem”



The Desigo CC Ecosystem is made up of technology, minds and experiences.

Developers, system integrators, solution partners, facility managers and OEMs benefit from **fast, dynamic and creative evolution of building management and the exchange of ideas, products and services.**

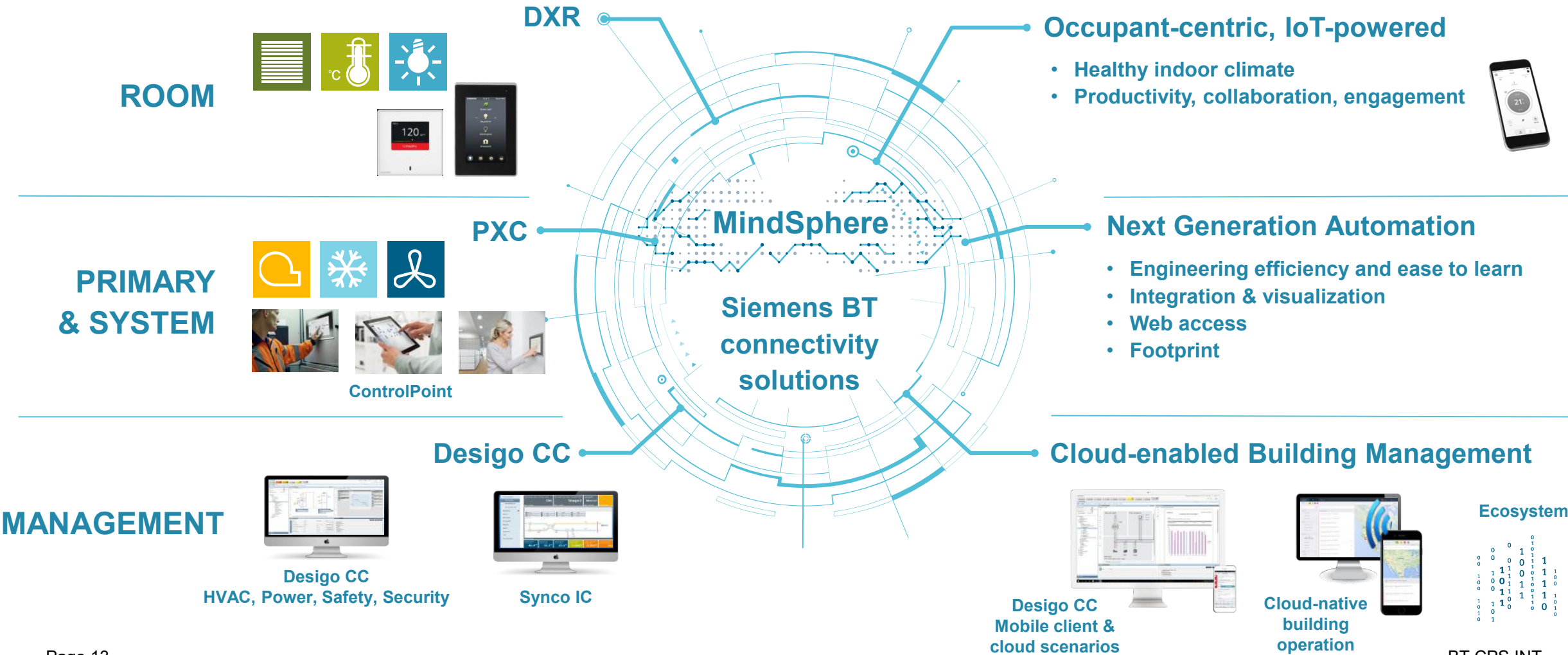
This simply means that the **Desigo CC Ecosystem** connects buildings, people and applications





FROM TODAY'S AUTOMATION

TO DIGITAL ENHANCED PORTFOLIO





**SpecWriter Online**  
Building Automation Systems Tutorial

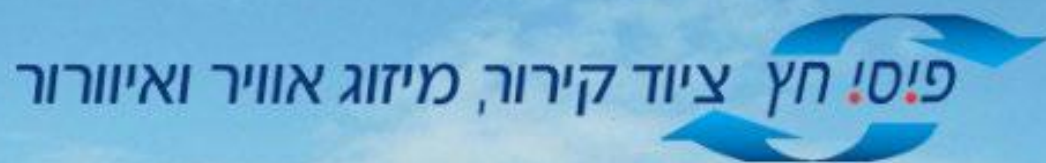


**SpecWriter Online**  
Fire Systems Tutorial

• <https://hit.sbt.siemens.com>



**CONTEL  
TECHNOLOGIES**  
for Smart Manufacturing





Siemens your partner for Building Technology

**SIEMENS**  
*Ingenuity for life*

# creating perfect places



... to heal



... to learn



... to work



... to succeed



# Thank you

**Adrian Meili**

Head Sales & Business Development  
Middle East & Central Asia Region

**Siemens is your  
trusted partner for  
creating perfect  
places today,  
tomorrow and  
beyond**

**SIEMENS**  
*Ingenuity for life*

