



DIGITAL

EcoStruxure™ Power

Igal MANOAH

Life Is On

Schneider
Electric

Power Distribution is going through a paradigm shift as the world gets more DIGITAL

Always On



The digital economy demands always-on power

Digitized



more connected things than people by 2025

Decentralized



70%

of new energy production capacity will be renewable by 2040

More power outages are disrupting business



Cost analysis of outage scenarios

Semiconductor production	€ 3,800,000 per event
Financial trading	€ 6,000,000 per hour
Data center	€ 750,000 per event
Telecommunications	€ 30,000 per minute
Steel works	€ 350,000 per event
Glass industry	€ 250,000 per event

Avoid unplanned outages for 100% service continuity



Eliminate electrical fires with data-driven maintenance



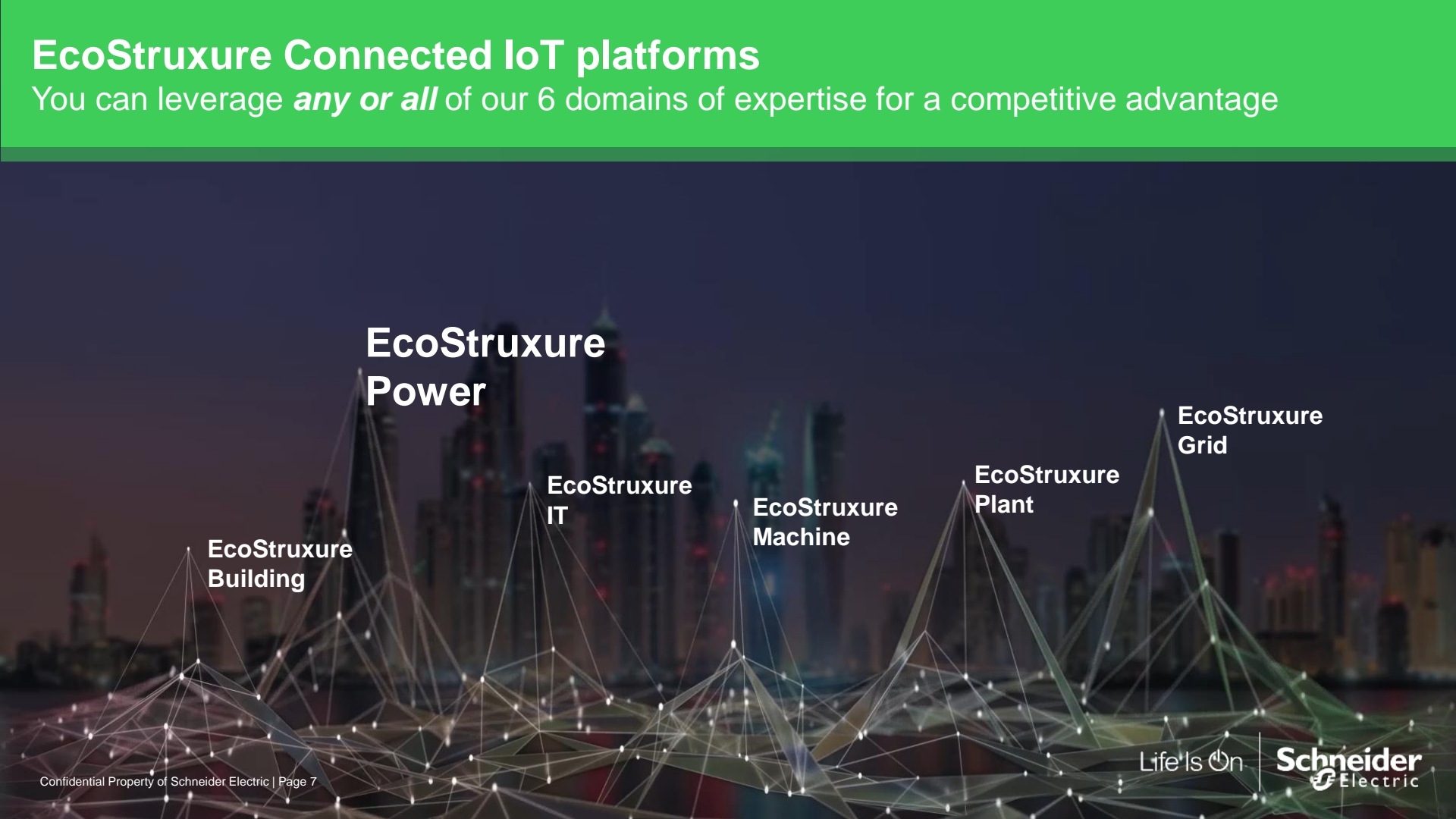
ECOSTRUXURE

delivers business results

built on our expertise and experience

EcoStruxure Connected IoT platforms

You can leverage *any or all* of our 6 domains of expertise for a competitive advantage



EcoStruxure
Power

EcoStruxure
Building

EcoStruxure
IT

EcoStruxure
Machine

EcoStruxure
Plant

EcoStruxure
Grid

Power Digitization Everywhere



Life Is On

Schneider
Electric

Translating the data deluge into meaningful insights

Context that drives business value

CLOSE THE LOOP



CONNECT

Connect everything from shop floor to top floor



COLLECT

Capture critical data at every level, from sensor to cloud



ANALYZE

Convert data into meaningful insights



TAKE ACTION

Drive action through real-time information and business logic



EcoStruxure Power

The digital backbone for electrical distribution

EcoStruxure™ Power
Innovation At Every Level

EcoStruxure™ Architecture

Apps,
Analytics &
Services

Edge
Control

Connected
Products

End-to-end Cybersecurity

Cloud and/or On Premise



EcoStruxure
Advisors



EcoStruxure
Facility Expert



EcoStruxure
Power Monitoring Expert



EcoStruxure
Substation Operation



PowerLogic
Meters



Acti 9 Control
& PowerTag



Enerlin'X
Com'X



Masterpact MTZ



Smart Panel



UPS



Premset



Easergy P3



SM6



INNOVATION

2 Major innovation on Connected Products

PowerTag

The smallest wireless energy sensor and load monitor



**Energy
Management**

Active Energy Class 1
(EN61557-12)



**Load
Monitoring**

U,I,V,P,PF
Instant values



**Power
Availability**

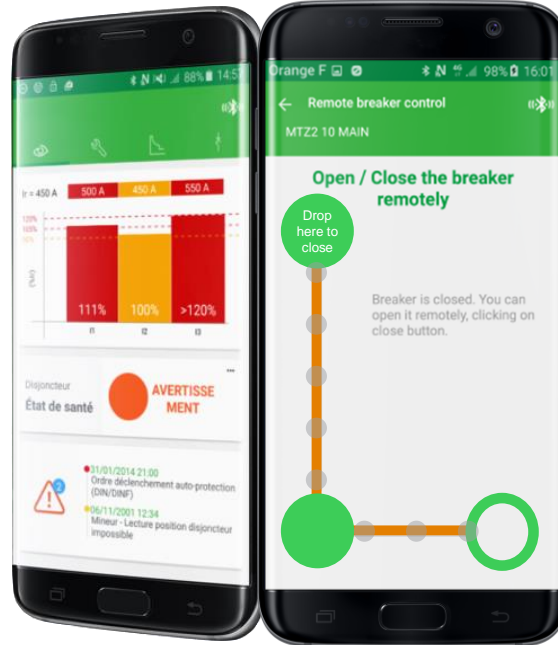
Alarming in case of
Power lost
Overload >80%

MasterPact MTZ

Connected Air Circuit Breaker with a dedicated mobile APP

Masterpact™ MTZ

FUTURE READY



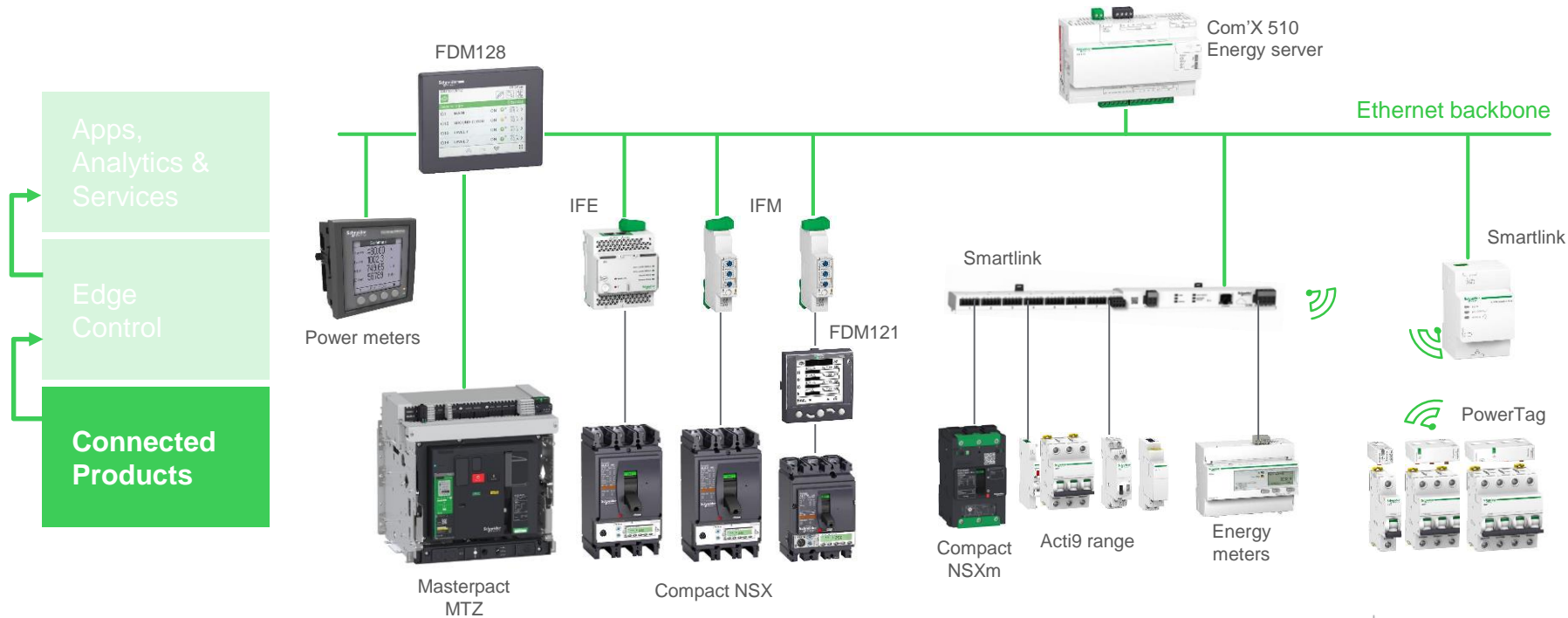
Eco^{truxure}™
Innovation At Every Level





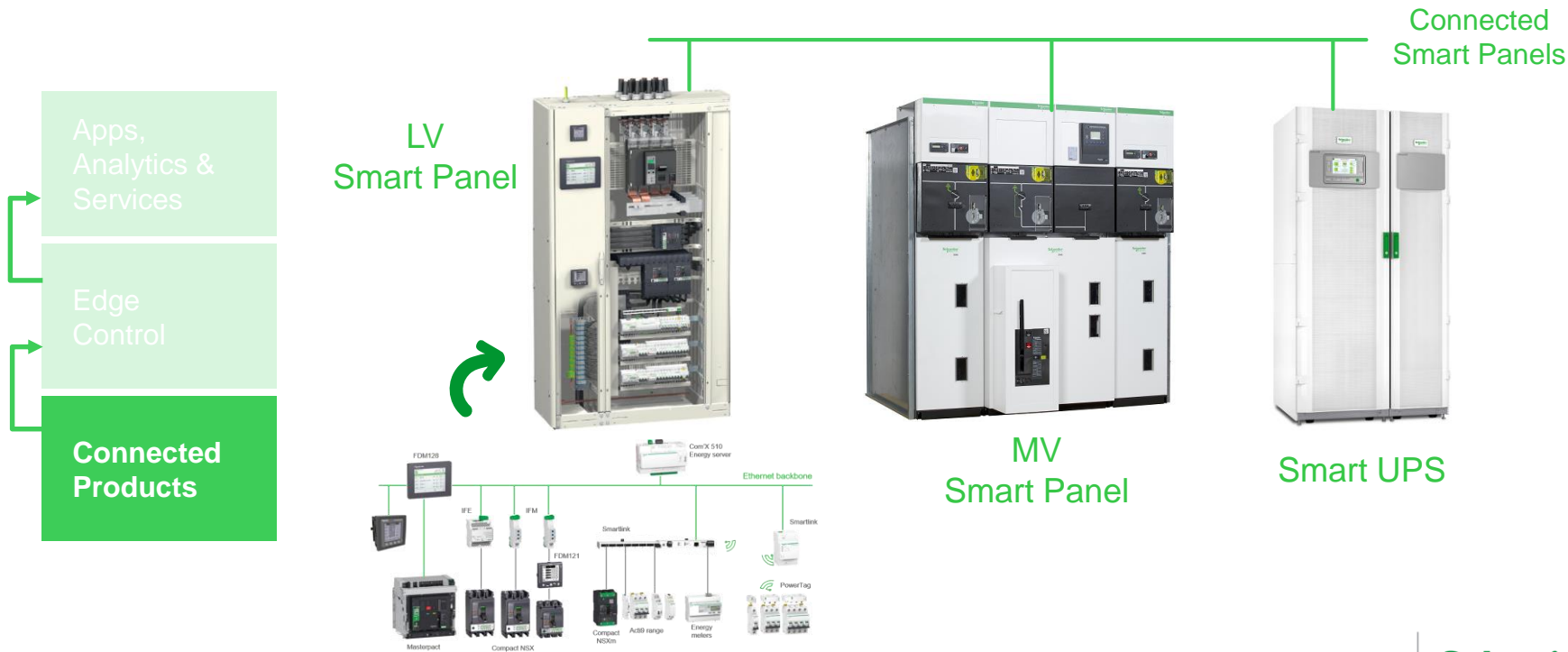
EcoStruxure Power

Connected Products



EcoStruxure Power

Smart Panels



EcoStruxure Power

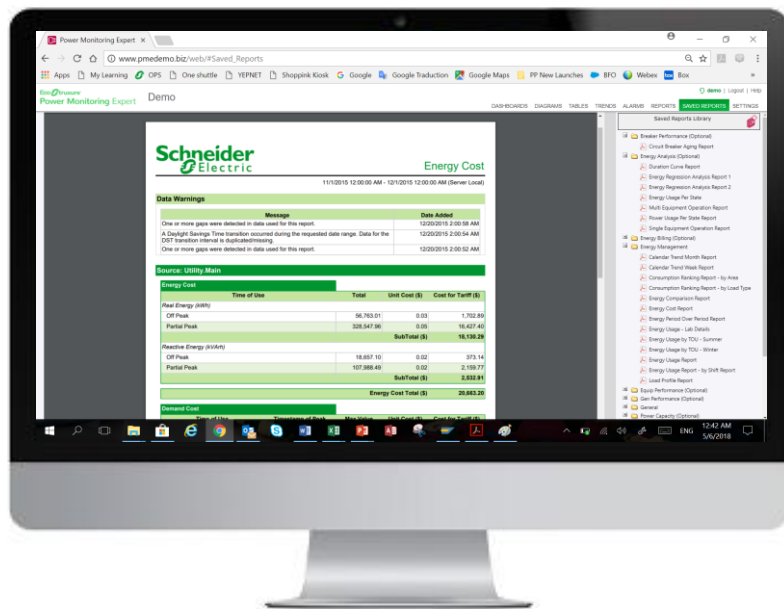
Large & Critical Buildings



Apps,
Analytics &
Services

Edge
Control

Connected
Products



Complete energy analysis
Electrical and energy monitoring
Building energy optimization
Energy & Power analytics
Billing
Power quality
Usage trends

Power Monitoring Expert

EcoStruxure Power

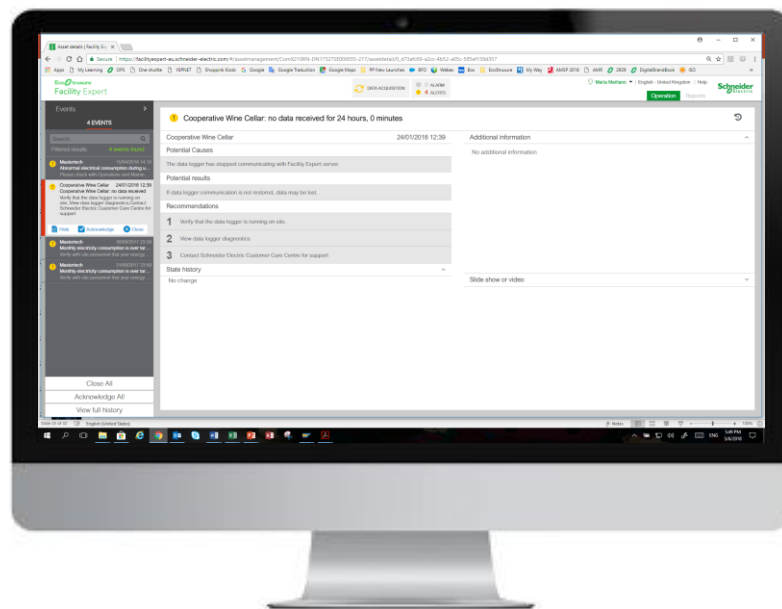
Medium / Multi-site Buildings



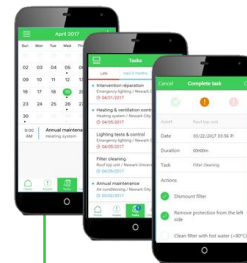
Apps,
Analytics &
Services

Edge
Control

Connected
Products



Facility Expert

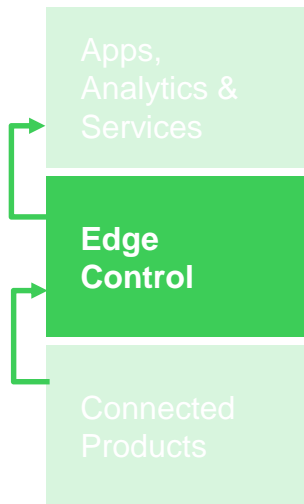


Facility Expert
mobile APP

Energy & Thermal Management
Multiple Distribution
Build, Upgrade, Split, Merge, Events
Recovery to recover
Reserve management tasks
Base load

EcoStruxure Power

Small Business



Energy efficiency
Energy saving
Quickly see energy savings



Facility Expert SB

EcoStruxure Power

Advisor Services

Apps,
Analytics &
Services

Edge
Control

Connected
Products



EcoStruxure Advisors

- Power / Asset / Resource Advisors

Analysis of data and assets
by the experts

Provide services to improve
the operational efficiency

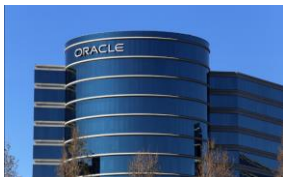
EcoStruxure Power systems are used around the world

Trusted by leading players worldwide



Nemours Children's Hospital, USA

Patient safety through highly reliable power



Oracle, USA

Software giant achieves high-quality power with fast payback



Melbourne Cricket Ground, Aus.

Power management and lighting automation system ensures sustainability



Geneva Airport, Switzerland

Modernizing the airport's entire electrical distribution system without delays.



Smith & Nephew, USA

Power monitoring reveals additional capacity to support new loads



Sappi Paper Mill, Belgium

Improving site planning and operational ability

- Proven electrical distribution and power management expertise delivering best-in-class solutions
- Scalable, open, and secure power IoT platform
- 170+ years of energy innovation
- A global presence with local teams in more than 100 countries

Life Is On

Schneider
Electric

Intel Data Center



Ichilov Hospital



Shaare Zedek Medical Center



Weizmann Institute Of Science





Applied Materials



Timna Airport



SAP building



Citibank



Leveraging our global reach with local expertise

Unique life cycle intimacy with our customers

+100

countries

+650k

partners

7k

professional and field
service experts

Power Distribution Redefined

From unconnected to

Connected Products

Increased value
with 24/7 relationship

Add value with


Edge Control

More value from increased
business performance

Add value with

Apps, Analytics & Services

Business partnership,
new opportunities



Future-ready
together

Life Is On



Schneider
Electric